



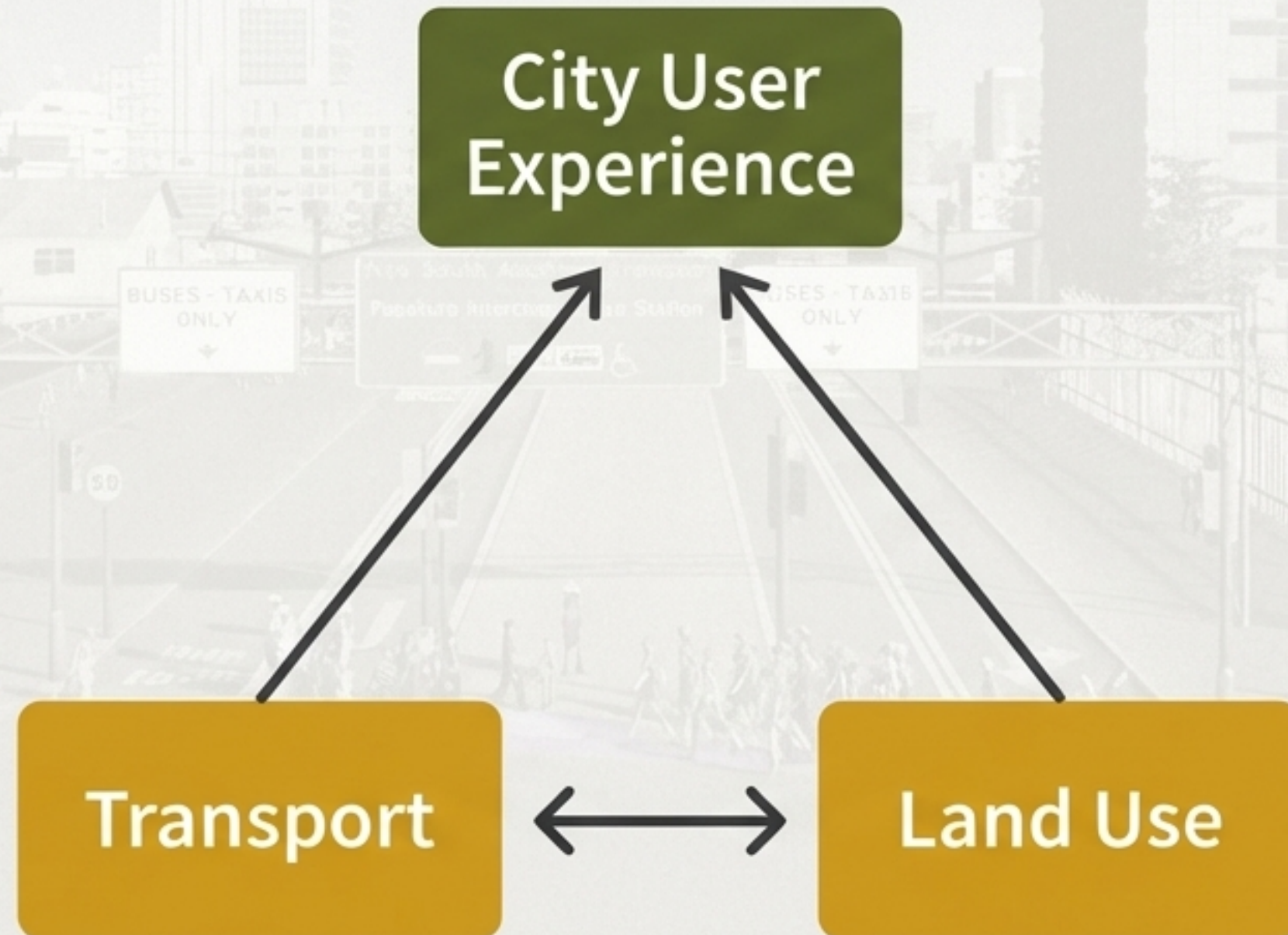
# Planning the Engines of Prosperity

A Case Study in Integrated Urban and Economic Development with Marsden Point



# The Foundation of a Thriving City is an Integrated System

Great cities are not accidents. They are the result of intentionally designing the relationship between how people move, how land is used, and the quality of life that results. When these three elements are in harmony, the city flourishes.

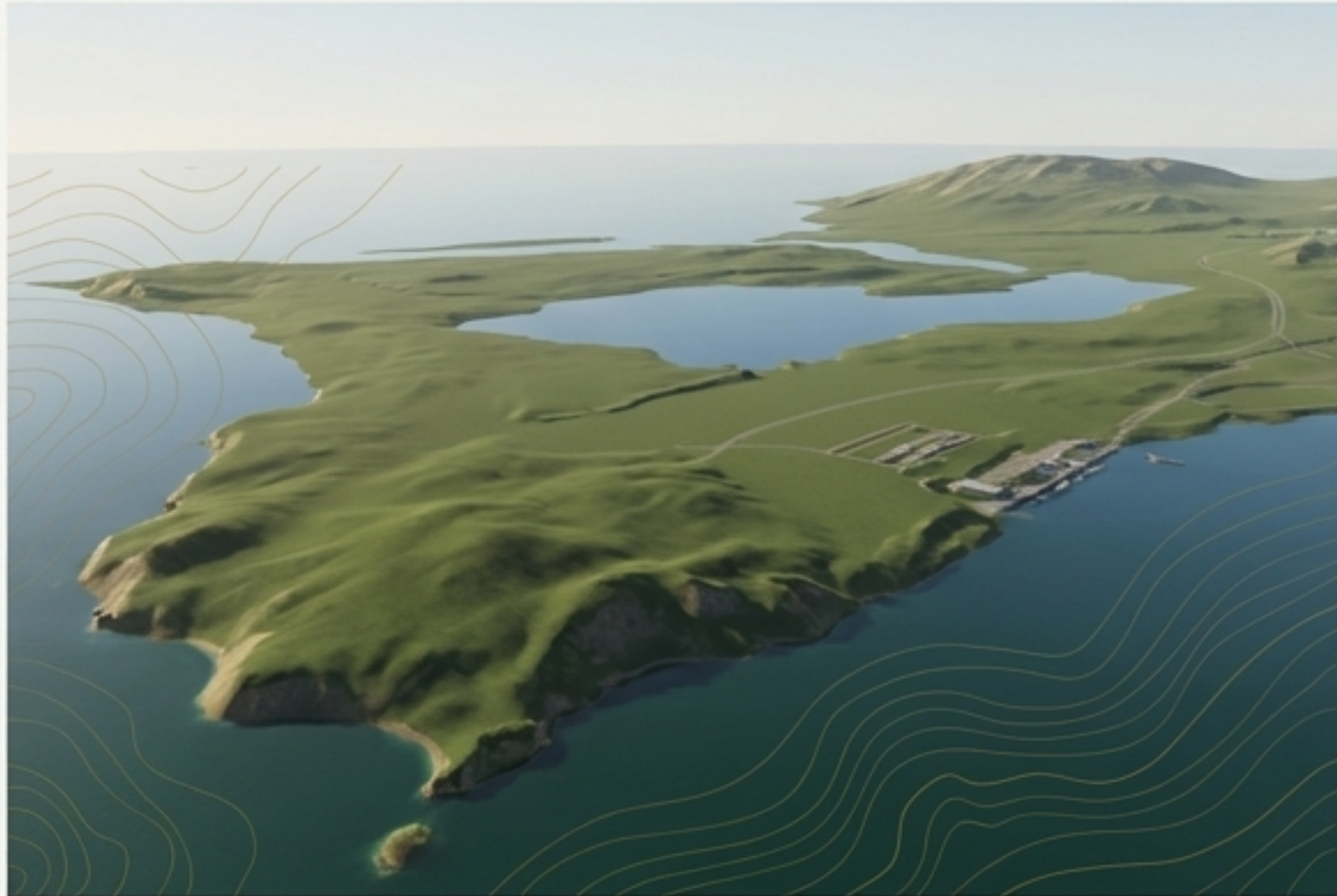




# The Laboratory: Prototyping a City from a Blank Canvas

To explore these principles in practice, we turn to Marsden Point—a city developed from scratch in a sophisticated urban simulation. This allows for rapid iteration and a clear demonstration of how strategic decisions shape urban outcomes. We will follow its journey from a foundational plan to a thriving metropolis.

Before



After





# The Blueprint: Starting with a Strategic Foundation

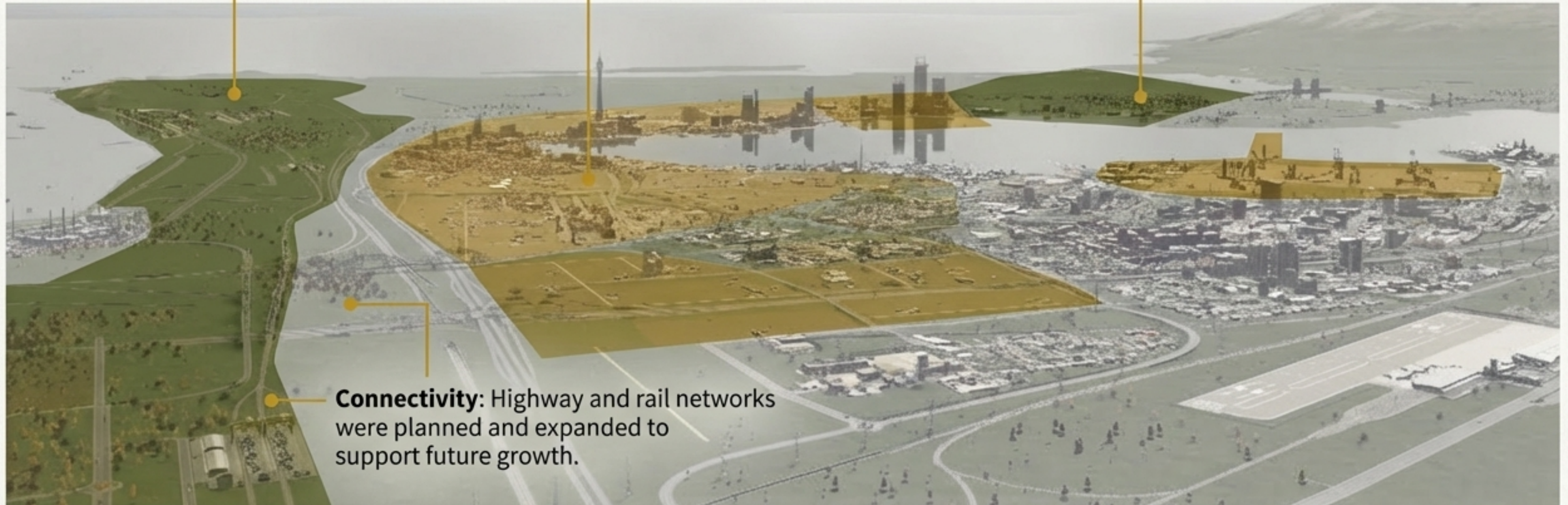
Marsden Point did not grow randomly. Its development was guided by a comprehensive strategy established from day one.

**Spatial & Land Use Plans Enacted:** A clear vision for growth was established.

**Spatial & Land Use Plans Enacted:** A clear vision for growth was established.

**Anchor Infrastructure:** A port and energy sector were established early to drive the economy.

**Connectivity:** Highway and rail networks were planned and expanded to support future growth.





# The Catalyst: When New Industry Comes Knocking



With a solid foundation, entrepreneurs saw an opportunity to capitalize on the region's growing agricultural output. The city's Economic Development team was approached by new ventures looking to establish processing and manufacturing facilities. This was a critical inflection point requiring a decisive planning response.



Grain & Cereal Production



Livestock Processing



Beverage Manufacturing



# From Opportunity to Master Plan

The planner's role was to ensure these new ventures could be integrated successfully. After a thorough review of existing plans and infrastructure capacity, the conclusion was clear: "We can do this." A Master Plan was drafted and set in motion, zoning land specifically for these new supply chain industries.



Cereal Plant



Livestock Processing Plant



Beverage Plant



# Building a Complete Economic Ecosystem

True economic development extends beyond production. The Master Plan also enabled the creation of an entire ecosystem of supporting businesses that bring goods to market, provide services, and create a vibrant city life.





# Prosperity's Consequence: The Need for New Communities

The success of the new industries created thousands of jobs. But these workers and their families needed places to live, with access to schools, parks, and shops. The next stage of the Master Plan focused on delivering a comprehensive housing solution.





# Case Study: The Planned Community of Whangarei Flats

The solution was Whangarei Flats, a semi-sufficient satellite town designed to support the new rural industries. Inspired by real-world counterparts like Pukekohe in Auckland, it provides a full suite of local amenities while maintaining strong transport connections to the main city center via road, bus, and metro rail.





# Designing for People, Not Just for Cars

The design of Whangarei Flats and the wider Marsden Point network prioritizes the human experience. Streets are designed as complete corridors that safely accommodate pedestrians, cyclists, and public transit, creating a more livable and efficient city.





# The Green Transit Corridor: Movement as Amenity

Effective transport corridors are more than just infrastructure; they are public spaces. By integrating green space, dedicated cycling paths, and efficient public transit, movement through the city becomes a pleasant and positive part of daily life.





# The Virtuous Cycle: Success Breeds Confidence

The successful integration of the first wave of industries and the development of Whangarei Flats sent a strong signal. This confidence attracted further investment, leading to the establishment of new heavy industries in concrete and steel, and even a new secondary port to handle the increased economic activity.





# The System Realized: How Planning Shaped the City Experience

The story of Marsden Point demonstrates the core principle in action. Strategic decisions about **Land Use** (industrial zones, new towns) required a robust **Transport** network (trams, metro, bike lanes), and together they created a high-quality **City User Experience** for residents, workers, and tourists.





# The Result: A Diverse, Vibrant, and Human-Scale Metropolis

Marsden Point is now a city defined by its bustling waterfront, diverse neighborhoods, thriving public spaces, and an economy built on a foundation of strategic planning.





# The Planner as Enabler

So, is the goal to be the City Cereal King? No. The goal is to be the planner who enables the Cereal King—and the entire city—to thrive. Great cities are not a matter of chance; they are a matter of design.

