

Flashing the BIOS: The Universal Codebase

From the Postcode Lottery to a Universal Language for Construction

Legacy: 1,175+ Local Zones

Alert Red



Future: ~20 National Standardised Zones (NSZ)

Biology Green



Transit Spine
6-storey minimum (6-Storey Min)

Primary Corridor
Primary Corridor (3-Storey Min)

Neighborhood Commercial
(Corner store/mixed use)

Low-Rise Residential
(Terrace housing)

Rural-Production
(Crep fields/Barn)

Rural-Extractive
(Forestry/Quarry)

▲ No Lifestyle Blocks

A single national codebase replaces 1,175 local variants. A developer in Auckland uses the exact same rulebook as a developer in Christchurch.

The Container: The Urban Dam

Visualising the Spatial Division for Growth and Protection

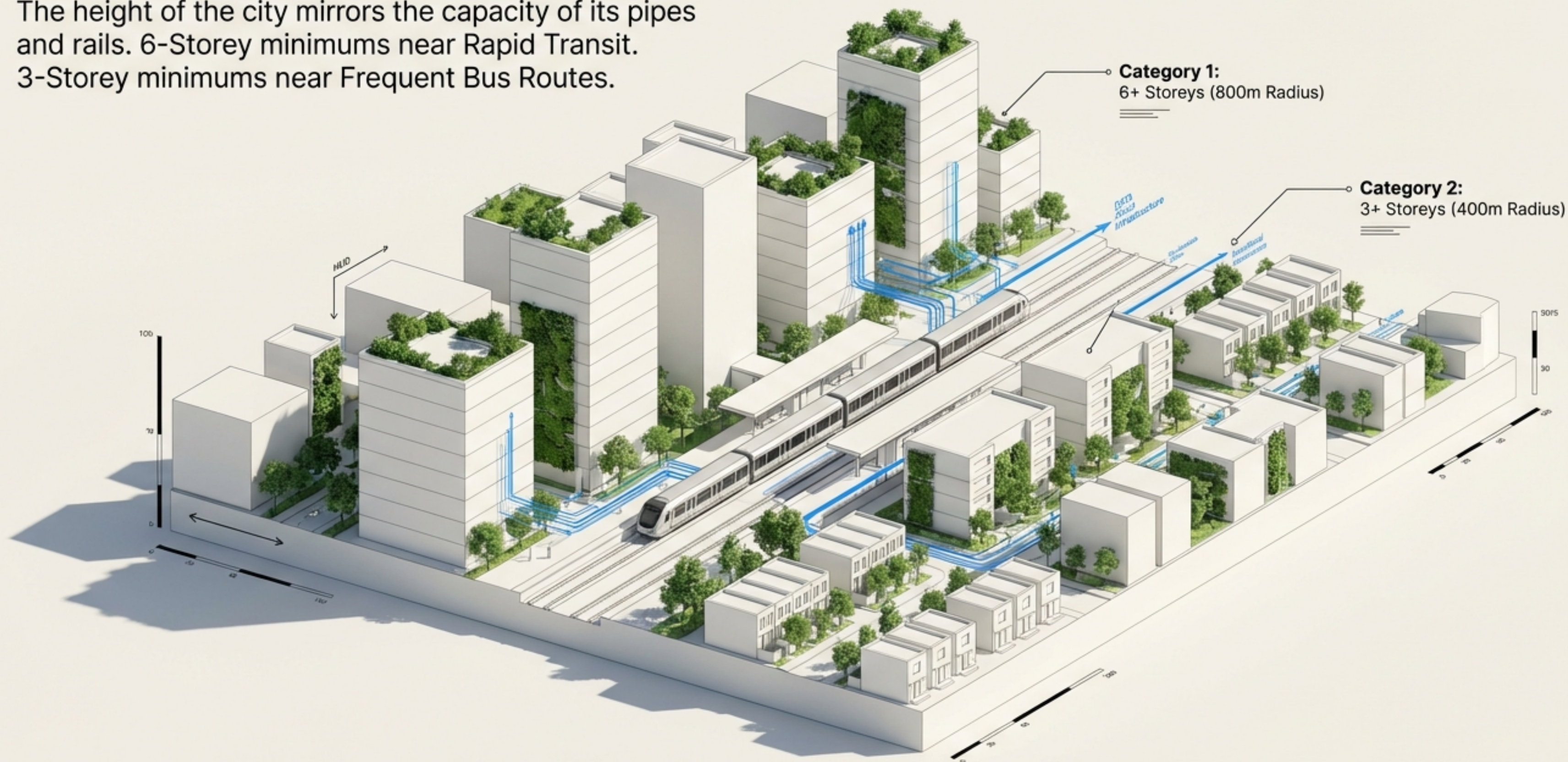


The Reservoir (UPA):
Infrastructure-led growth where density is prioritized.

The Dam Wall (UCA): Where urbanization is prohibited to stop the leak and protect productive soil.

The Skeleton: Density Follows Frequency

The height of the city mirrors the capacity of its pipes and rails. 6-Storey minimums near Rapid Transit. 3-Storey minimums near Frequent Bus Routes.



The Flesh: Everyday Life Just Outside Your Door.

Moving beyond the Tower vs. Sprawl binary.
We populate neighborhoods with Missing
Middle typologies that foster social cohesion.



Single-Use Car-Dependent Suburb

Cottage Courts

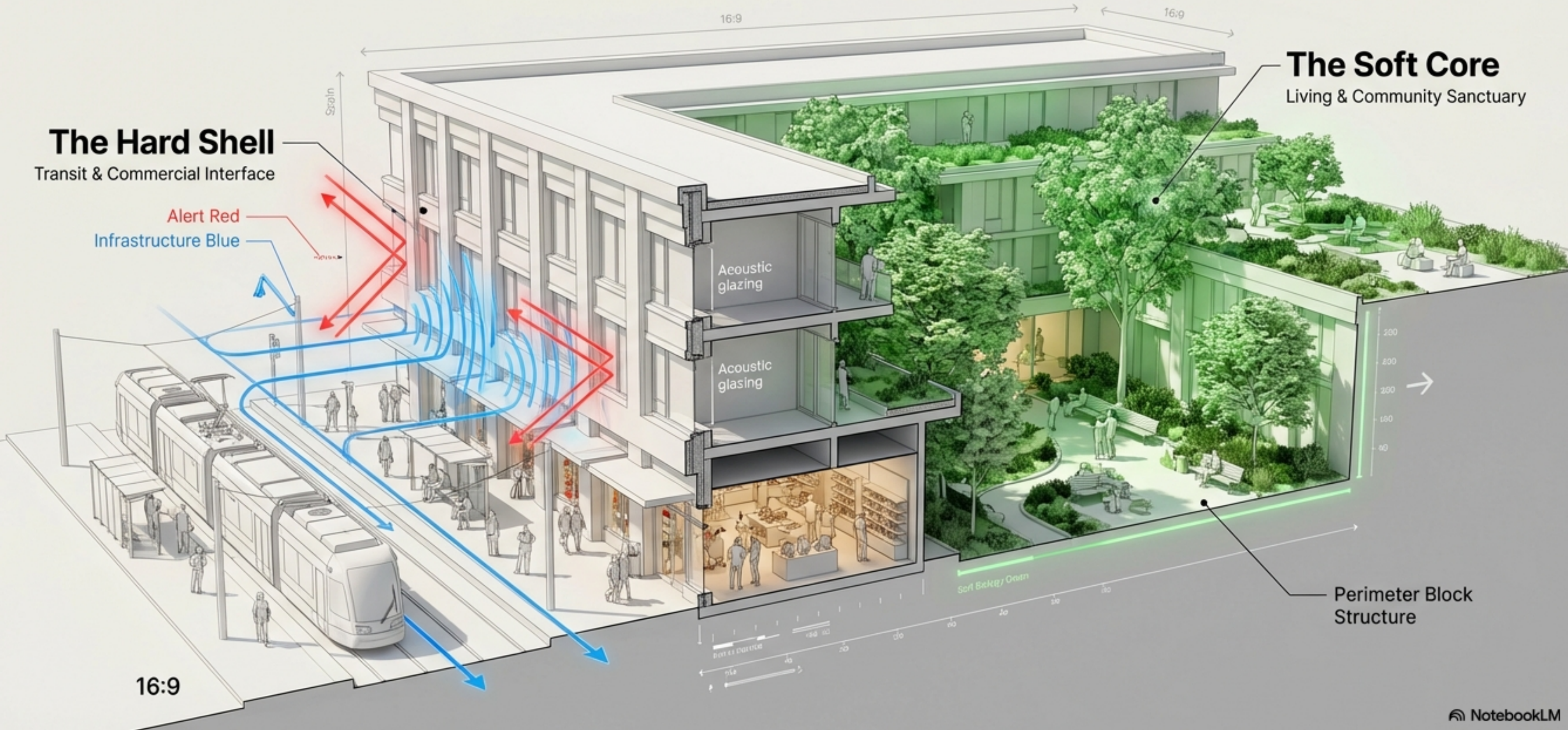


Townhouses

Corner Commercial
(As-of-Right)

The Interface: Designing for Silence

The Newcomer Principle: Density requires sanctuary. A 'Hard Shell' blocks noise, protecting the 'Soft Core' for community connection.



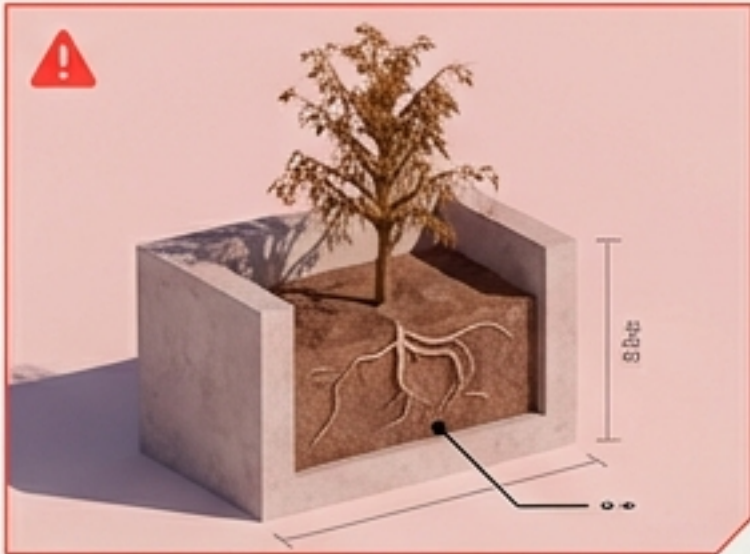
The Lungs: Nature as Biological Utility

Nature is not decoration; it is a nutritional requirement.
The 3-30-300 Rule is mandatory infrastructure.

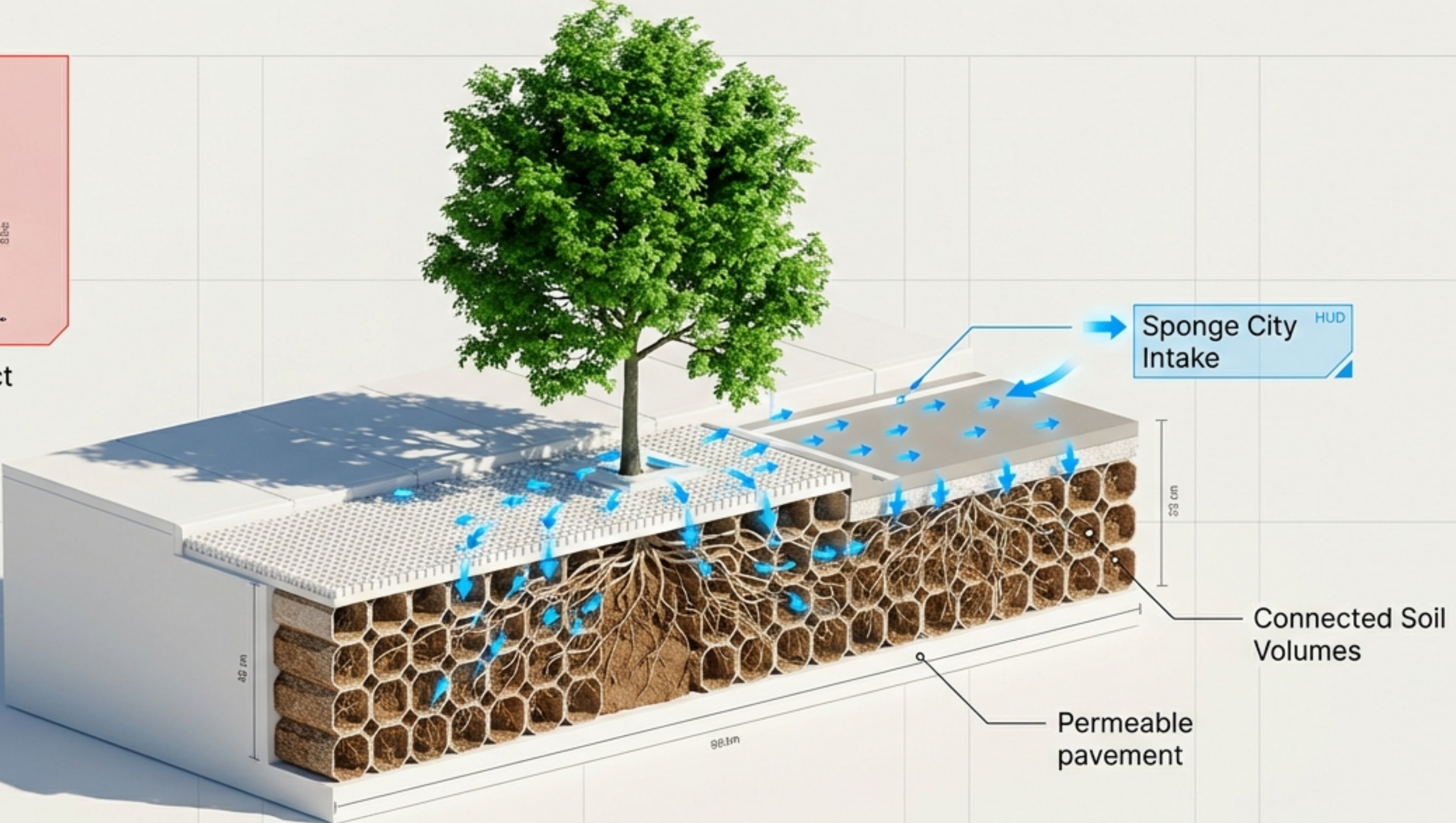


The Roots: Sponge City Infrastructure

90% reduction in impermeable paving. 50% CAPEX savings on pipes. We engineer soil to let roots connect and thrive.

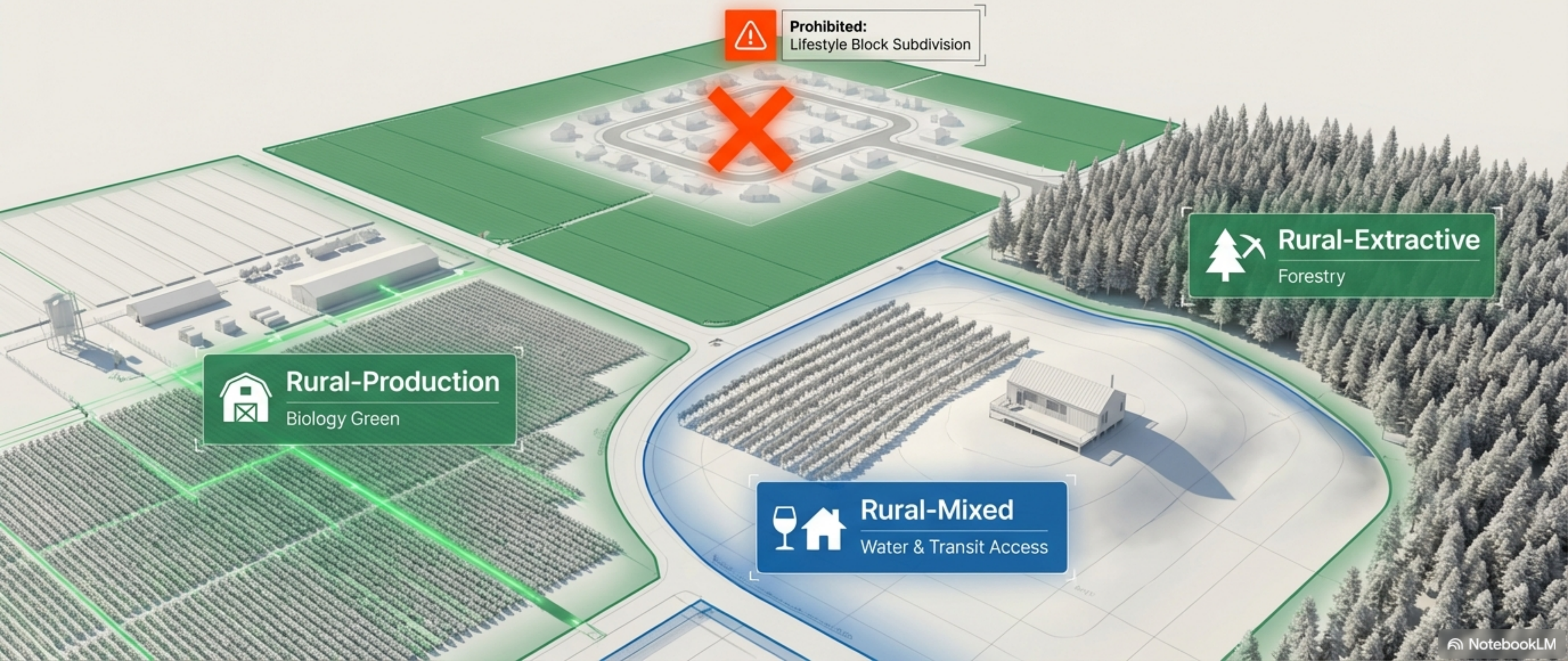


Legacy: The Coffin Effect



The Engine Room: The Rural Sectors

Protecting the productive soil from fragmentation. Rural zones are for production, tourism, and resource management, not housing.

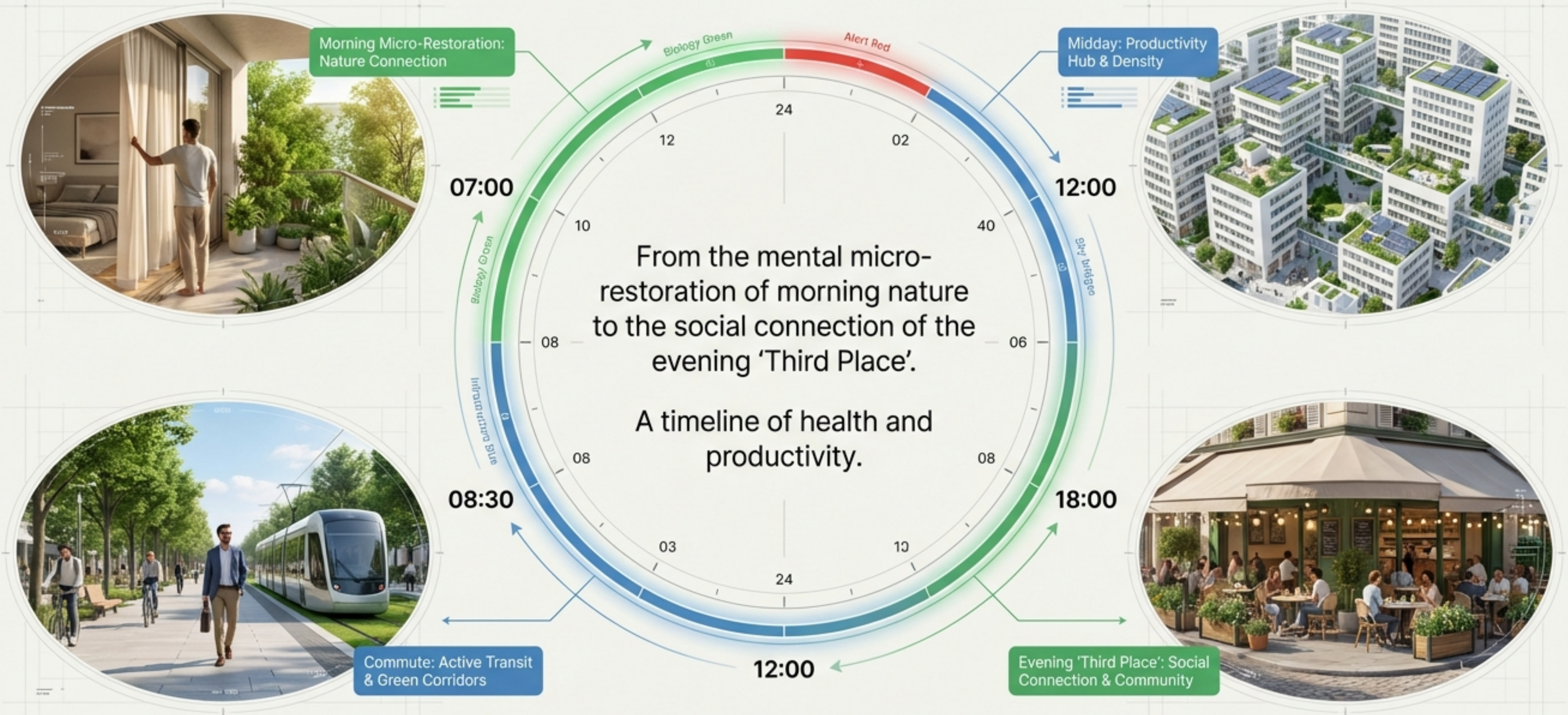


The Red Line: Hazard Avoidance

We do not build in the path of the future. The Red Line Policy prohibits infrastructure investment in high-risk zones, turning liabilities into linear parks.



The User Experience: Rhythms of a Resilient Day



The Dividend: ROI of Resilience

Grey Assets (Legacy)

Traffic Congestion: Illustrates traffic jams with cars and labels for 'Traffic Congestion', 'High maintenance costs', and 'CO₂ emissions'. A 'CO₂' cloud is shown above the cars.

Aging Infrastructure: Shows a cracked water pipe with an 'Alert' icon and a 'Water pipe' label. A 'Muted HUD frame' is visible in the top right corner.

Social Isolation: Depicts a person sitting alone on a bench with a 'Social Isolation' label and a 'Community value' gauge showing low levels.

Green Assets (Future)

Ecological Value: Features a tree with a '\$' icon and a '1:3 ROI' label. A 'HUD' progress bar is at the top.

Water Management: Shows a water filter with 'Water retention' and 'Filtration' labels, and a '50% CAPEX Savings' claim.

Social Cohesion: Illustrates a group of people in a park with 'Social Community' and 'Community space' labels. A 'HUD' progress bar is at the top.

Fiscal:
Infrastructure efficiency

Environmental:
80% emission reduction

Social:
Aging in place

The Resilient Habitat Equation



1. Public Health

2. Economic Fairness

3. Safety

$$\text{Science} + \text{Tool} + \text{Limit} = \text{The Resilient Habitat}$$

(3-30-300) (Urban Dam) (Hazard Avoidance)

The formula for the next century. Balancing public health, economic fairness, and safety.

Build the Future.

START SIMULATION

The spaces we build today will build the people of the next century.
You have the blueprint. It is time to enter the Digital Twin.